

# Safety and Speedy Car Parking Systems

**BIVD - DANANG**  
**[Cart Parking System]**

07 .2015



DAEWOO ROYAL SYSTEM CO.,LTD  
car parking system

# Safety and Speedy Car Parking Systems

## CART PARKING SYSTEM - SPECIFICATION

TYPE	DAEWOO ROYAL CART PARKING										
PARKING SPACES	56 BAYS/4LAYER										
ADMISSIBLE CAR	SEDAN-M					SEDAN-L					S.U.V.
	LENGTH	5000	MM	LENGTH	5050	MM	LENGTH	5050	MM	MM	
	WIDTH	2040 (MIRROR)	MM	WIDTH	2100 (MIRROR)	MM	WIDTH	2100 (MIRROR)	MM	MM	
	HEIGHT	1550	MM	HEIGHT	1550	MM	HEIGHT	1950	MM	MM	
	WEIGHT	1850	KG	WEIGHT	1800	KG	WEIGHT	2200	KG	KG	
MOTOR	, 22Kw X 4P										
REDUCER	HELLICAL GEAR REDUCER										
SPEED	60~90 M/MIN										
MOTOR	-										
REDUCER	-										
SPEED	-										
MOTOR	1.5Kw X 4P , 2.2Kw X 4P										
REDUCER	HELLICAL GEAR REDUCER										
SPEED	70~100 M/MIN										
MOTOR	1.5Kw X 4P										
REDUCER	WORM REDUCER										
SPEED	45 M/MIN										
MOTOR	0.4Kw X 4P										
REDUCER	HELLICAL GEAR REDUCER										
SPEED	7 M/MIN										
CONTROL OF SPEED	INVERTER CONTROL										
CONTROL OF SEQUENCE	P.L.C										
OPERATION TYPE	TOUSH SCREEN										
POWER MAIN	380V, 50Hz, 3P, 5W(R,S,T,N,E)										
SUPPLY LIGHT/FIRE FIGHTING/EMERGENCY	220V, 50Hz, 1-PHASE										
ENTERANCE DOOR	2400(W) X 1800(H) X 2UP DOOR (STD) 2500(W) X 2200(H) 2UP DOOR										

## ARCHITECTURAL WORKS

- This shows the critical dimension of plant, please refer to the attached drawings for details.
- Hoist pit works, site clearance.
- Do works related to the entrance opening
- Build up the concrete floor(or foundation) & each side of wall correctly to enable anchoring, check to ensure that waterproofing should be carried out before or after installation.
- The concrete working should be conducted to protect waterproof lining from any damage caused by anchoring. (refer in the incorporated dwg)
- A ventilator is required to be installed on the top of the tower to remove humidity.
- The water flowed in should be drained from the floor of parking system.
- Requested to consult with us before install fire fittings, conduits, trunking.
- Ensure to discuss with us before set up trenches, purifiers, the apparatus of drainage

## ELECTRICAL WORKS

- Please lead in the primary power source into its control panel.
  - AC380V, 50Hz, 3 $\phi$ -4W, 45KVA/Unit
  - Electric wire thickness :
    - Main power line(22mm ), Earth line(14mm )<sup>2</sup>
- Please supply the temporary power source for the erection
  - Capacity :AC380V, 50Hz, 3 $\phi$ -4W, 45KVA/Unit
  - The Period of time : Until the completion of commissioning

NOTE



DRAWN CHECKED REVIEWED APPROVED

SCALE A3 N / S A1 1 /

PROJECT

Project - BIDV DANANG

DWG. NO. 00

DWG.NAME

SPECIFICATION

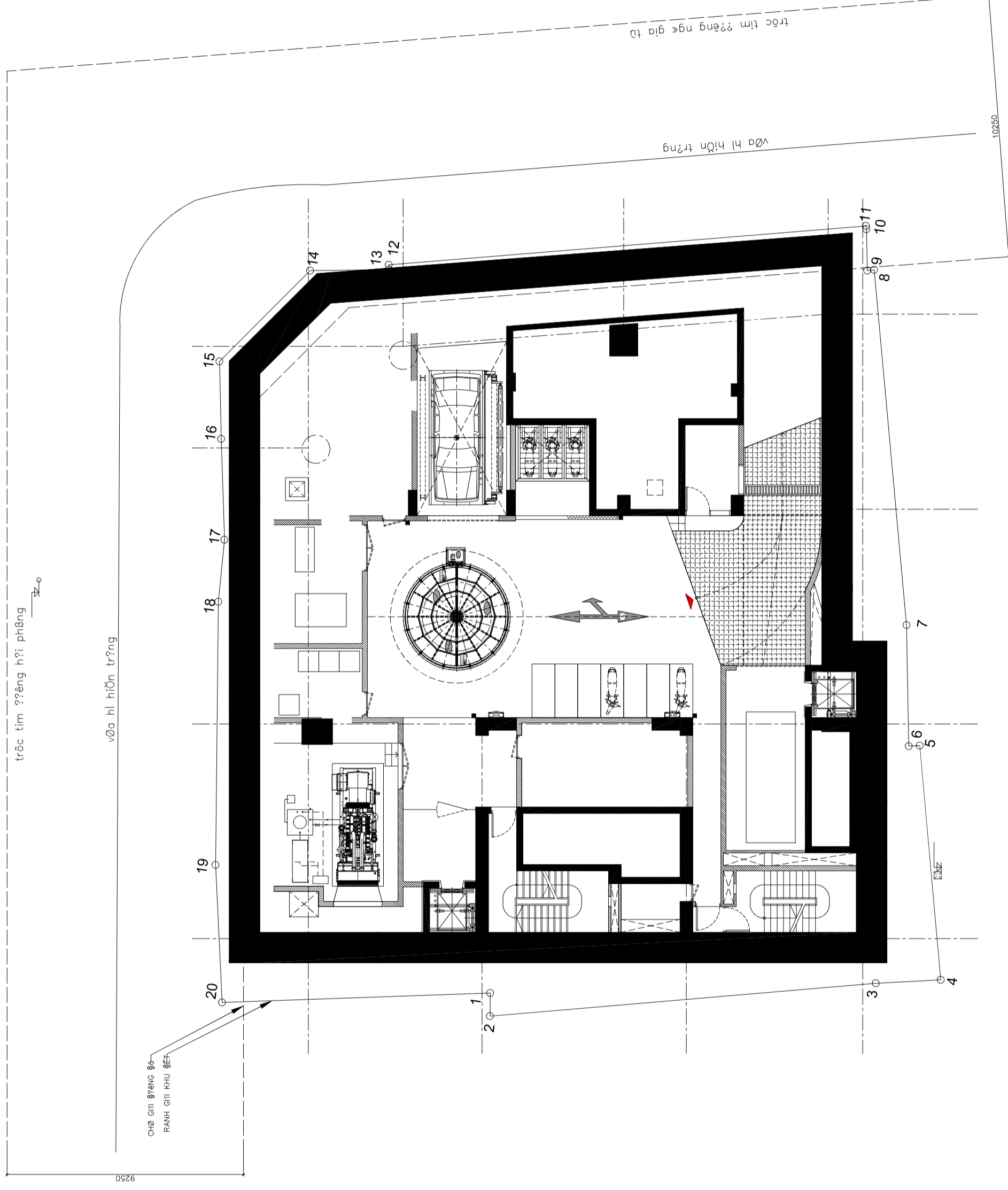
NO.

DATE 02/2015

2400(W) X 1800(H) X 2UP DOOR (STD)

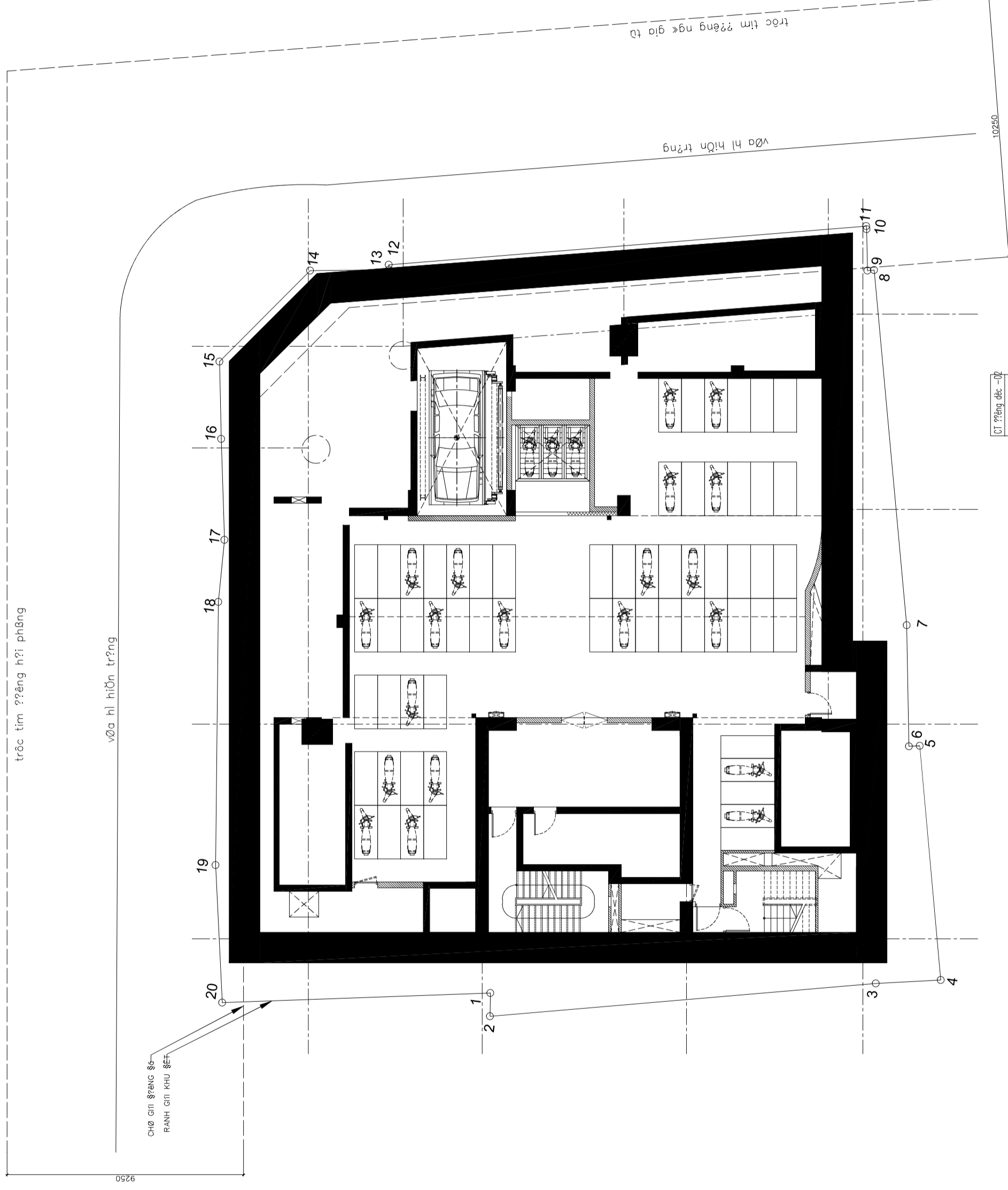
2500(W) X 2200(H) 2UP DOOR

# Safety and Speedy Car Parking Systems



NOTE	DAEWOO ROYAL SYSTEM CO.,LTD car parking system		DRAWN	CHECKED	REVIEWED	APPROVED	SCALE	A3 N/S A1 1/	PROJECT	Project - BIDV DANANG	DWG. NO.	00
							DATE	02/2015	DWG.NAME	1ST BASEMENT	NO.	

# Safety and Speedy Car Parking Systems



NOTE



DRAWN  
CHECKED  
REVIEWED  
APPROVED

SCALE  
A3 N/S  
A1 1/1

DATE  
02/2015

PROJECT  
DWG.NAME  
2ND BASEMENT

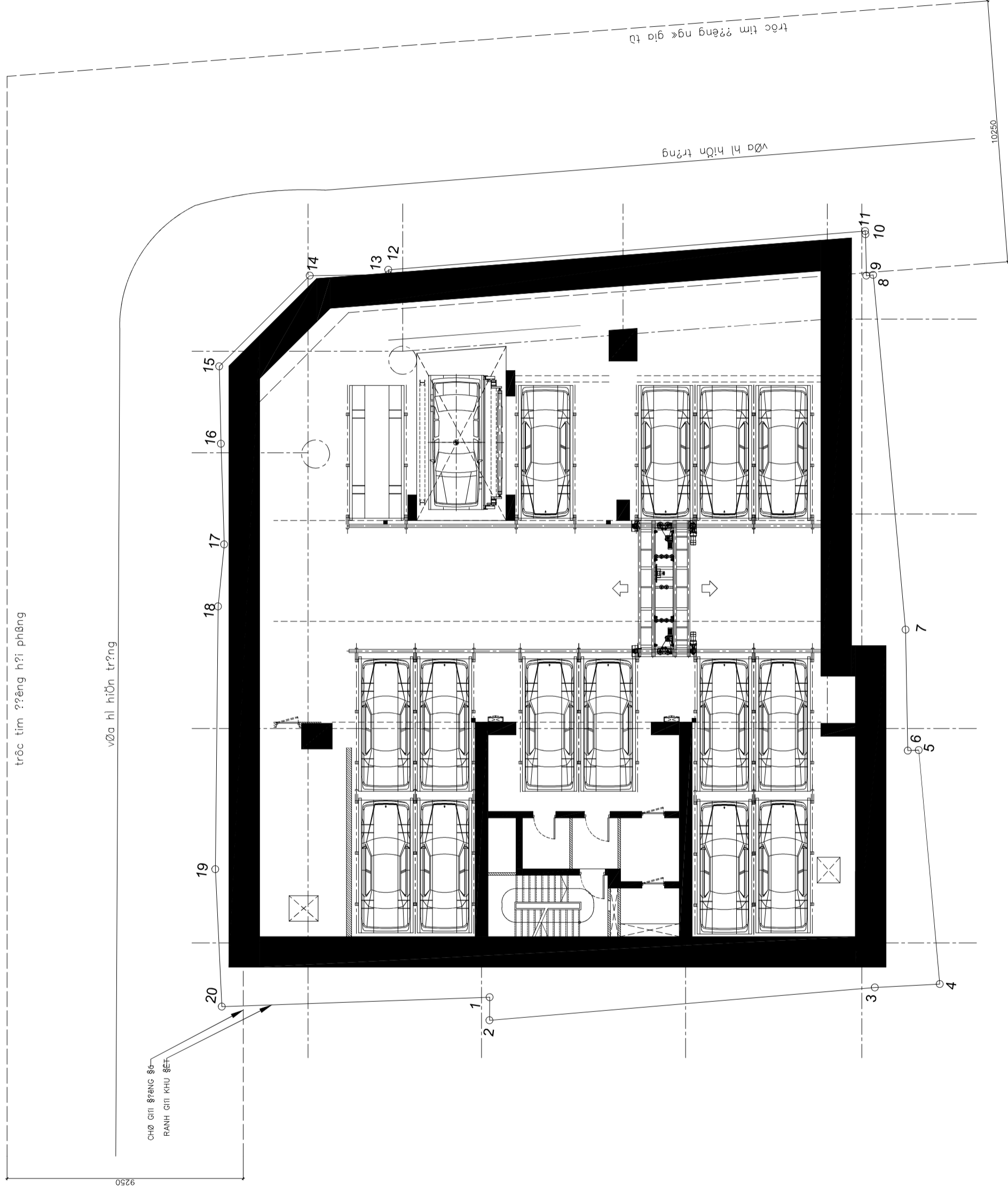
Project - BIDV DANANG

DWG. NO.  
00

NO.

CT ??êng d?c -02  
A-203-204

# Safety and Speedy Car Parking Systems



NOTE

--

**DRS**  
 DAEWOO ROYAL SYSTEM CO.,LTD  
 car parking system

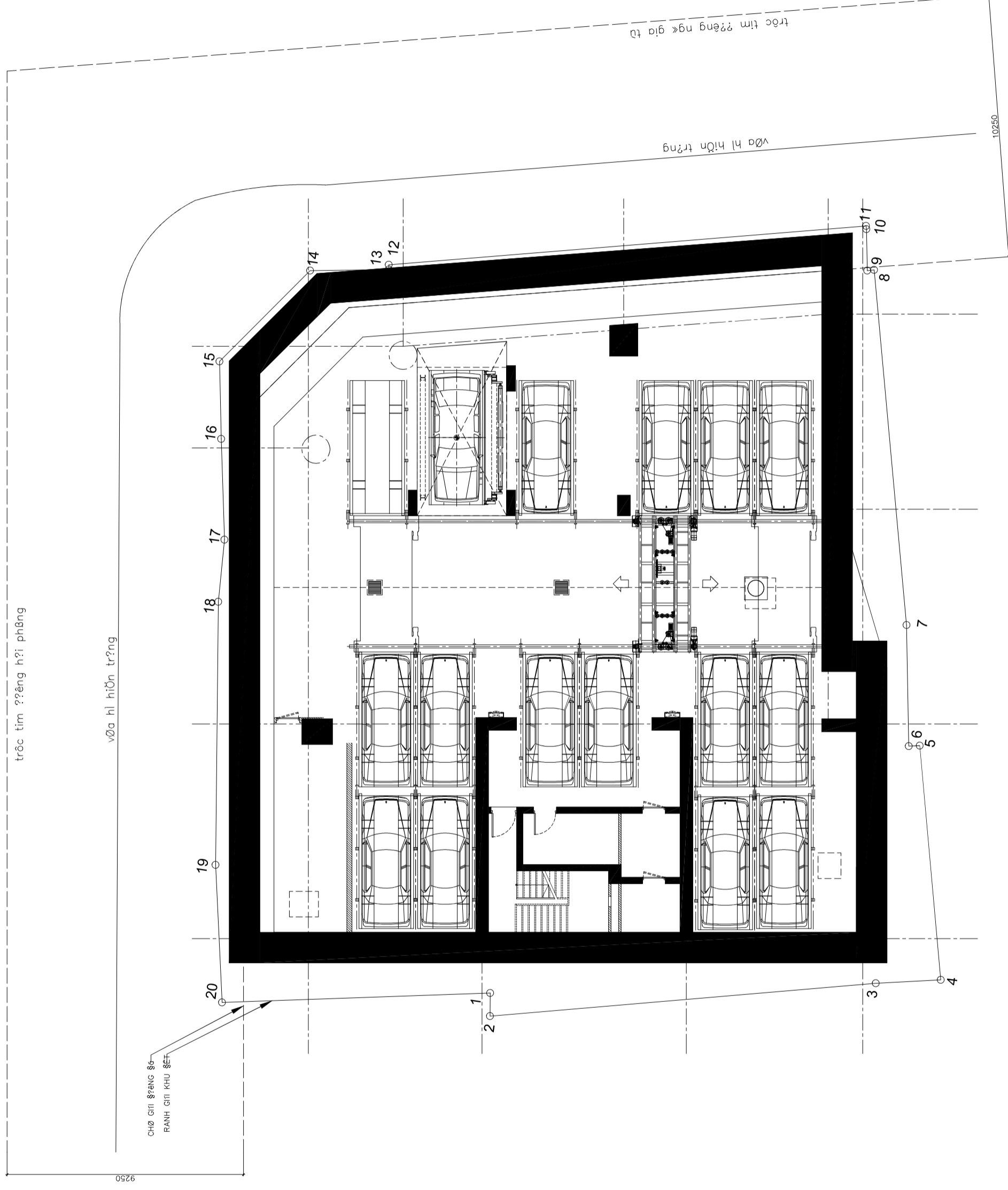
DRAWN	CHECKED	REVIEWED	APPROVED

SCALE	A3 N/S
DATE	02/2015

PROJECT	DWG.NAME
Project - BIDV DANANG	3RD BASEMANT

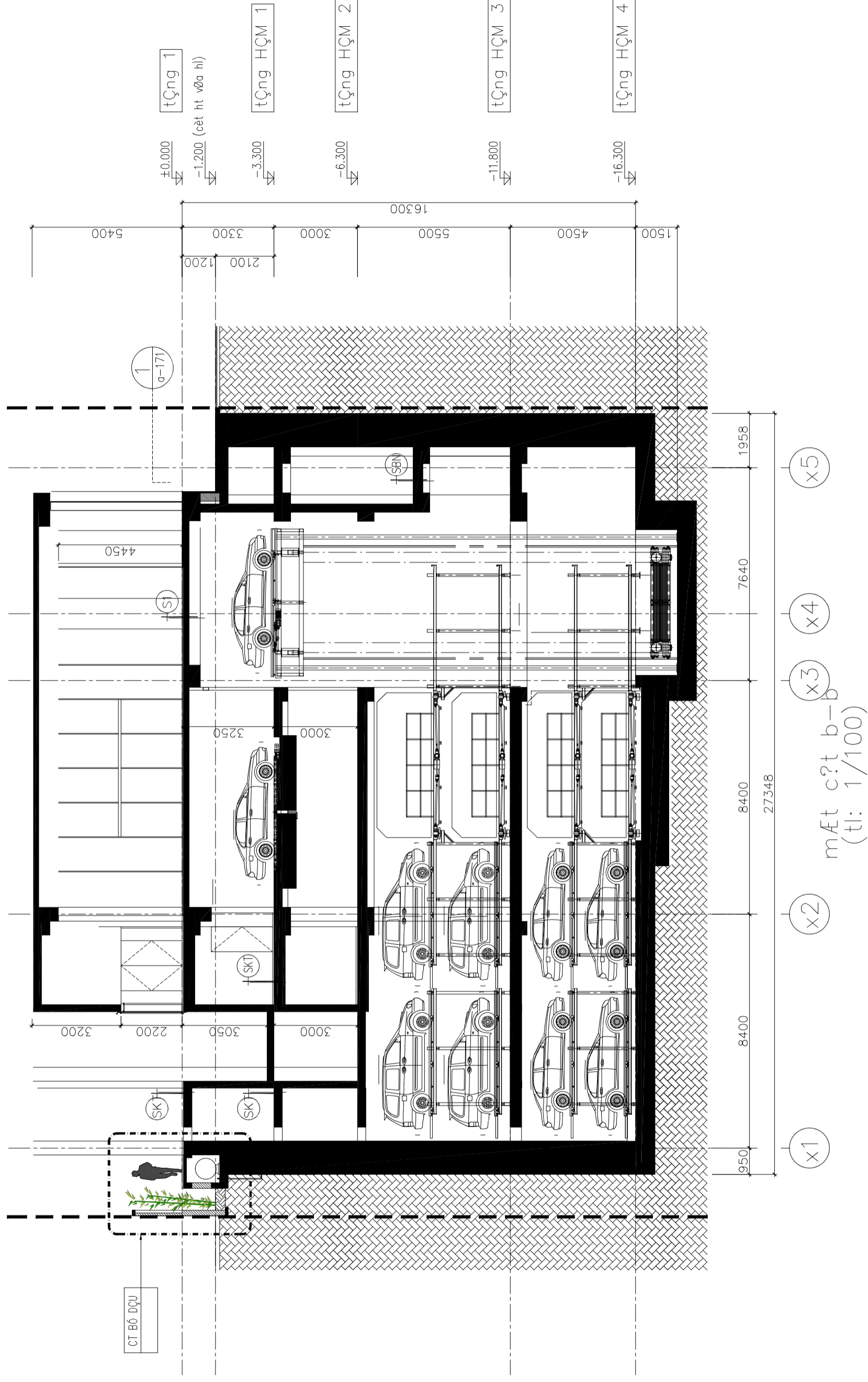
DWG. NO.	NO.
00	

# Safety and Speedy Car Parking Systems



NOTE	DRAWN		CHECKED	REVIEWED	APPROVED	A3	N/S	PROJECT	Project - BIDV DANANG	DWG. NO.	00
	DAEWOO ROYAL SYSTEM CO.,LTD car parking system					A1	1 /	DWG.NAME	4TH BASEMANT	NO.	
						SCALE	DATE				
							02/2015				

# Safety and Speedy Car Parking Systems



NOTE

**DRS**  
 DAEWOO ROYAL SYSTEM CO.,LTD  
 car parking system

DRAWN

CHECKED

REVIEWED

APPROVED

SCALE

A3 N/S

PROJECT

PROJECT

Project – BIDV DANANG

DWG. NO.

00

NO.

SPECIFICATION

NO.